

2018 J/24 Midwinter Championship

28 February – 4 March 2018

The Organizing Authority (OA) will be Twelve USA, Inc., in
conjunction with USJCA District 10, USJCA Fleet 10
and the U.S. J/24 Class Association Miami, Florida, USA
Host Venue - Shake-A-Leg-Miami (SALM)
<https://www.j24midwintersmiami.com/>

Sailing Instructions

1. RULES:

- 1.1. The regatta will be governed by the rules as defined in the Racing Rules of Sailing (RRS).
- 1.2. Only US Sailing Prescriptions to RRS 40, 61.4, 67, 70.5(a), 76.1, 82, Appendix R, and Appendix V shall apply and will be posted on the Official Notice board. This changes NOR 1.4.
- 1.3. The Regatta Regulations of the International J/24 Class Association (IJCA) will apply.
- 1.4. Support Boats – Notwithstanding the preamble to Part 4 rules, RRS 41 shall apply from the time a boat leaves her mooring for the first race of each day until she returns to her mooring after racing. If RC displays Race Signal AP over H, RRS 41 restrictions are suspended until she leaves her mooring again.
- 1.5. Bow numbers will be assigned to each boat and will be used as identification for the boat during the regatta. Bow numbers shall be applied in accordance with the instructions supplied (See Attachment V) and shall remain affixed until after a boat hauls out at the end of the regatta.
- 1.6. In accordance with RRS G3, a boat chartered or loaned for this event may carry national letters or a sail number in contravention of the class rules.
- 1.7. RRS Appendix T: Arbitration shall apply.
- 1.8. RRS 61.1(a) is changed so that the red flag displayed by a protesting boat shall have a hoist of not less than 150mm and a fly of not less than 200mm.
- 1.9. RRS 44.3 is changed so that code flag "I" may be used as the yellow flag and so that the flag used (either yellow or code flag "I") shall have a hoist of not less than 150mm and a fly of not less than 200mm.
- 1.10. Class rule C.2.1(b) is replaced with class rule J.4.3 that allows limited crew substitution.
- 1.11. RRS 60.4 (a)(1) is changed to read: "...but not rules 41, 42, 44, 46, and 49.2 sentences 1 and 2, or...."
- 1.12. RRS 63.7 shall be replaced by – "If there is a conflict between the Notice of Race (NOR) and the Sailing Instructions (SIs), the Sailing Instructions shall apply." This changes RRS 63.7.
- 1.13. If there is a conflict between languages, the English text will take precedence.

2. NOTICE TO COMPETITORS:

- 2.1. Notices to competitors will be posted on the official notice board(s) located in the breezeway in front of SALM reception desk in breezeway.
- 2.2. Any questions regarding these Sailing Instructions shall be submitted in writing to the Race Committee PRO. The questions and any answers will be posted on the official notice board as soon as possible.

3. CHANGES TO SAILING INSTRUCTIONS:

- 3.1. Any change to the Sailing Instructions will be posted before 0900 hrs. on the day it will take effect, except that any change to the schedule of races will be posted by 2100 hrs on the day before it will take effect.
- 3.2. The following restrictions on the number of entries shall apply:

3.2.1. Entry into the championship is limited to the first 45 boats that complete registration and pay the required fees.

4. SIGNALS MADE ASHORE:

- 4.1.** Signals made ashore will be displayed on the flag pole at SALM.
- 4.2.** When flag AP is displayed ashore, '1 minute' is replaced with 'not less than 60 minutes' in the race signal AP. This changes RRS race signals.
- 4.3.** When flag Y is displayed ashore, RRS 40 applies at all times while afloat. This changes the Part 4 preamble.

5. SCHEDULE OF RACES:

5.1.

Day	Date	Time	Event/Activity
Thursday	1 March	1800 1830	All boats must be afloat. Competitor's Meeting & Opening Ceremonies.
Friday	2 March	0800-0930 1100	Crew Weigh-in*. First Warning Signal with additional races to follow
Saturday	3 March	0800-0930 1100	Crew Weigh-in*. First Warning Signal with additional races to follow.
Sunday	4 March	0800-0930 1100 1400 1800	Crew Weigh-in* First Warning Signal with additional races to follow. No warning signal after this time. Awards.
*These scheduled crew weigh-ins are only for race committee approved replacements or crews specified per NOR 1.10.			

5.2. Eight (8) races are scheduled

5.3. Maximum of three (3) races per day unless the event falls behind schedule.

6. CLASS FLAG:

6.1. The J/24 Class Flag (J24 insignia on a white background) shall be used in accordance with RRS 26.

7. RACING AREA:

7.1. Attachment I shows the location of the racing area.

8. COURSES:

8.1. Courses will be windward/leeward with 5 legs (course 5) or four legs (course 4).

8.2. The diagrams in Attachment II show the courses.

8.3. No later than the warning signal, the race committee signal boat will display the course designator, the approximate compass bearing and the distance of the first leg. The RC will also broadcast this information. Failure to broadcast or to receive this information shall not constitute grounds for granting redress. This changes RRS 62.1(a).

8.4. An offset mark (designated mark 1a) will be used in conjunction with mark 1. The offset mark will be placed to the left of mark 1 (looking up wind) at approximately a right angle to the weather leg and approximately 10 – 15 boat lengths to port of mark 1.

- 8.5. Mark 2 will be a gate consisting of two marks (mark 2P and mark 2S). If the gate is not present, mark 2 shall be rounded to port. Except when there is a change of course, the gate will be positioned approximately to windward of the RC signal boat at a distance to the discretion of the RC. The gate may be laid after the starting signal.
- 8.6. Except for a change of course, the finish for course 5 will be to windward of mark 1.
- 8.7. No 5-leg course will be shortened to less than four (4) legs in length, and no 4-leg course will be shortened to less than three (3) legs in length. For purpose of this SI only, the distance between mark 1 and the offset mark will not be regarded as a leg of the course. This changes RRS 33.

9. MARKS:

- 9.1. Marks 1, 1a, 2P, and 2S will be white Bacardi cylinders.
- 9.2. Marks for the start and/or finish shall be yellow cylinders and/or a staff displaying an orange flag on a Race Committee boat.
- 9.3. The following are rounding marks: 1, 1a, 2P, and 2S.

10. AREAS OF OBSTRUCTION:

- 10.1. No areas are designated as obstructions.

11. START:

- 11.1. Races will be started using RRS26 with the warning signal made 5 minutes before the starting signal.
- 11.2. The starting line will be between a staff displaying an orange flag on the Race Committee signal boat at the starboard end and a nearby mark or staff displaying an orange flag on a Race Committee mark boat at the port end.
- 11.3. A boat starting later than 10 minutes after her starting signal will be scored Did Not Start without a hearing. This changes RRS 63.1, A4 and A5.
- 11.4. Race Committee may broadcast starting information, countdowns and the bow numbers of any boats subject to individual recall (RRS 29.1) and boats disqualified under RRS 30.3 and 30.4 OCS on the VHF channel designated in the Radio Communication portion of these SIs. Failure to make or receive such broadcasts or the order of transmission shall not be grounds for redress. This changes RRS 62.1(a).

12. CHANGE OF THE NEXT LEG OF THE COURSE:

- 12.1. To change the next leg of the course, the race committee will move the original mark (or the finishing line) to a new position.
- 12.2. If a change of course is made at mark OS, marks 2s/2p may be substituted by a single mark to be left to port.
- 12.3. Except at a gate, boats shall pass between the race committee boat signaling the change of the next leg and a nearby mark, leaving mark to port and race committee boat to starboard. This changes RRS 28.

13. FINISH:

- 13.1. The finishing line for course 4 will be between a staff displaying an orange flag on a Race Committee boat on the port end and a nearby mark or staff displaying an orange flag on a Race Committee boat at the starboard end.
- 13.2. The finishing line for course 5 will be between a staff displaying an orange flag on a Race Committee boat on the starboard end and a nearby mark or staff displaying an orange flag on a Race Committee boat on the port end.

13.3. If the RC intends to start another race on the same day, it will display the flag Second Substitute (with no sound) while the boats are finishing. This changes RRS race signals.

14. PENALTY SYSTEM:

14.1. The Scoring Penalty, RRS 44.3, will apply, with penalties modified as below:

14.2. Rule 44.1(a) and 44.1(b) continue to apply.

14.3. The race score for a boat that takes a Scoring Penalty shall be the score she would have received without that penalty, made worse by the penalty number. The penalty number shall be calculated by applying the scoring penalty percentage, shown in Attachment IV, that best suits her situation against the number of boats competing and rounding to the nearest whole number (rounding 0.5 upward). However, she shall not be scored worse than Did Not Finish. The scores of other boats shall not be changed by application of these penalties; therefore, two boats may receive the same score. This changes RRS 44.3(c).

14.4. The reporting requirements of RRS 44.3(b) may be satisfied by contacting the Race Committee by VHF radio channel identified in SI 27, Radio Communication. Additionally, a boat accepting a Scoring Penalty under SI 14.1 shall file a "Scoring Penalty Acceptance Form" available at the Race Office within the Protest Time Limit defined in SI. The Protest Committee will post a list of boats that have properly accepted a Scoring Penalty on the Official Notice Board.

14.5. Other penalties as per RRS 64.1 apply for breaking some IJCA rules. See Attachment III.

15. TIME LIMITS AND TARGET TIMES

15.1. The target time for races is 60 to 75 minutes. Failure to meet the target time will not be grounds for redress. This changes RRS 62.1(a).

15.2. Boats failing to finish within 20 minutes after the first boat sails the course and finishes will be scored TLE (Time Limit Expired) without a hearing. A TLE score shall be two more points than the number of boats that have finished within the time limit. This changes RRS 35, 63.1, A4 and A5.

16. PROTEST AND REQUEST FOR REDRESS:

16.1. Protest forms are available at the Jury desk located at SALM's front desk. Protests and requests for redress or reopening shall be delivered there within the appropriate time limit.

16.2. The protest time limit is 90 minutes after the last boat has finished the last race of the day or from the time the race committee signals no more racing for the day (signaled on the water), whichever is later. If the race committee signals no more racing for the day on land the protest time limit will be 60 minutes from that signal. The protest time limit will be posted on the official notice board.

16.3. The race committee will post a list of penalties being assigned by the race committee prior to the end of the protest time limit. The deadline for requests for redress based on these assigned penalties will be either 30 minutes after posting or the protest time limit, whichever is later. This changes RRS 62.2.

16.4. Notices will be posted no later than 10 minutes after the protest time limit to inform competitors of hearings in which they are parties or named as witnesses. Hearings will be held in the protest room, located Shake A Leg, beginning at the time posted.

16.5. Breaches of instructions 11.3, 18, 21, 23, 24, 25, 26, and 27 will not be grounds for a protest by a boat. This changes rule 60.1(a). Penalties for these breaches may be less than disqualification if the jury so decides.

16.6. On the last scheduled day of racing, a request for shall be delivered no later than 30 minutes after the decision was posted. This changes RRS 62.2.

17. SCORING:

- 17.1. Three races are required to be completed to constitute a championship.
- 17.2. When fewer than five races have been completed, a boat's series score will be the total of her race scores. When five or more races have been completed, a boat's series score will be the total of her race scores, excluding her worst score. This modifies Appendix A.

18. SAFETY REGULATIONS:

- 18.1. Before the warning signal of the first race each day, each boat shall sail on starboard tack past the stern of a designated race committee boat displaying flag L and hail her bow number until acknowledged by the race committee repeating her bow number.
- 18.2. A boat that retires from a race or does not intend to compete in a race or returns to the racing area shall notify the race committee as soon as possible.

19. REPLACEMENT OF CREW OR EQUIPMENT

- 19.1. There shall be no crew replacement or substitutions unless allowed per RRS 87 and described in SI 1.10.
- 19.2. Even if replacement/substitution is allowed, the number of crew shall not change during the regatta.
- 19.3. Substitution of damaged or lost equipment will not be allowed unless authorized by the race committee. Requests for substitution shall be made in writing to the race committee at the first reasonable opportunity.

20. EQUIPMENT AND MEASUREMENT CHECK:

- 20.1. A boat or equipment may be inspected at any time for compliance with the class rules and the sailing instructions. On the water, a boat may be instructed by a race committee equipment inspector or measurer to proceed immediately to a designated area for inspection.

21. EVENT ADVERTISING AND BOW NUMBERS:

- 21.1. Boats shall display bow numbers that are supplied by the organizing authority. Such bow numbers shall be installed according to the instructions supplied (See Attachment V) and shall remain in place for the duration of the regatta.
- 21.2. Boats shall display event advertising that is supplied by the organizing authority. Such advertising shall be installed according to the instructions supplied with them and shall remain in place for the duration of the regatta.

22. OFFICIAL BOATS:

- 22.1. Race Committee Boats will be identified by a Race Committee as:

Category	Flag
Race Committee Boats	Blue RC Flag
Jury	Judge Flag

23. SUPPORT BOATS:

- 23.1. Support boats shall comply with 1.4.
- 23.2. Support boats shall remain no less than 150m from the race course from the Preparatory signal until all boats have finished or retired or the race committee has signaled a postponement, general recall or abandonment.
- 23.3. Failure of a support boat to comply with any of these SI 23 rules may be considered a breach of RRS 2, Fair Sailing, by the boats associated with the support boat and is subject to protest. Any penalty applied to the

boats associated with the support boat shall be at the discretion of the jury and may not be excluded from their score. This modifies RRS 64.1(c) and A2.

23.4. Support boat drivers shall have valid third-party liability insurance in the same amount as is required of each participating boat and provide proof of that insurance at registration.

24. TRASH HANDLING:

24.1. Competitors shall not dispose of trash in the water. Trash shall be held for proper disposal ashore or may be placed on official boats if such facilities are available.

25. AFLOAT AND HAUL-OUT RESTRICTIONS:

25.1. Boats shall be afloat by 1800 hrs. Thursday, March 1st and shall not be hauled out during the regatta except with, and according to the terms of prior written permission of the jury. This includes rudders.

26. DIVING EQUIPMENT, PLASTIC POOLS, AND OTHER PROHIBITED ACTIONS:

26.1. Underwater breathing apparatus and plastic pools or their equivalent shall not be used between the time the boat is afloat and the end of the regatta. The hull may be cleaned at any time by swimming or keelhauling using ropes, cloth or other equipment designed for that use.

26.2. Careening by any means for the purpose of cleaning or inspecting the hull is prohibited during the regatta.

27. RADIO COMMUNICATION:

27.1. Except in an emergency, a boat shall not make voice or data transmissions and shall not receive voice or data communication that is not available to all boats. This shall apply from the time she leaves her mooring for the first race of the day until racing for the day is complete.

27.2. The race committee may choose to make VHF radio communications to the fleet on channel 69. It is strongly encouraged that each boat has a VHF radio on board capable of receiving these communications.

28. PRIZES:

28.1. Prizes will be awarded to at least the top five (5) boats entered.

28.2. A prize will be awarded to the boat that finishes mid-fleet, score rounded if necessary.

28.3. A prize will be awarded for the top women's entry in which the entire crew is comprised of women.

28.4. Additional prizes may be awarded at the discretion of the Organizing Authority.

29. DISCLAIMER OF LIABILITY:

29.1. Competitors participate in the regatta entirely at their own risk. See RRS 4, Decision to Race. The organizing authority will not accept any liability for material damage or personal injury or death sustained in conjunction with or prior to, during or after the regatta.

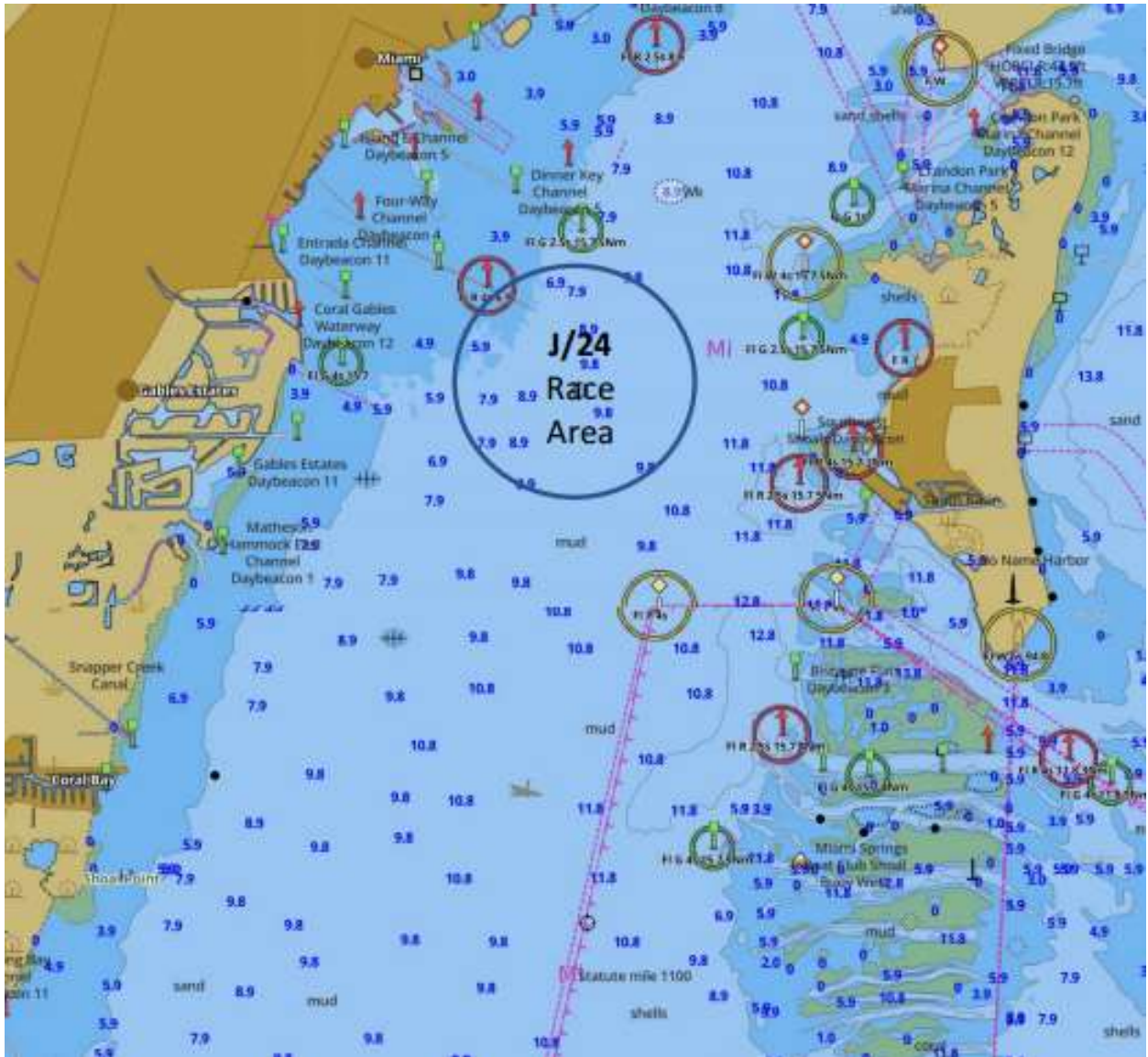
29.2. All competitors will be required to sign a Competitor Liability Waiver form to be provided in the registration package.

30. INSURANCE:

30.1. Each participating boat shall be insured with valid third party insurance with a minimum coverage of \$300,000.00 USD per incident or the equivalent.

ATTACHMENT I

RACING AREA APPROXIMATE LOCATION



ATTACHMENT III

Alternative Penalties for Breaking Some Class Rules

The following penalties for a boat that breaks these listed class rules would be in place of disqualification. All of these scoring penalties shall be calculated according to RRS 44.3(c).

Class Rule	Infringement	Scoring Penalty
B.3	Complete Measurement Certificate, including the Inventory of Required and Optional Equipment is not on board	20%
C.4	Advertising does not conform to World Sailing (Reg 20) standards	20%
C.9.4 & C.9.5	Mainsail is set outside of the limit marks	20%
C.5.1(a)(1)	Bailing bucket (9 liter min. with lanyard) is not on board	20%
C.7.2(a)(9)	Approved compass device is not present or not functional	20%
C.5.1(a)(4)	Throwable lifesaving device with attached sea anchor is not on deck, ready for use	20%
C.5.1(a)(5)	First aid kit is not on board	20%
C.5.1(b)(1) C.5.1(a)(2) C.5.2(a)(10)	Any of anchors(s), outboard motor/engine, battery or engine fuel container(s) are not in their proper location and secured against movement	20%
C.7.3(a)(11)	Elastic (shock) cord is used in the standing or running rigging where it is not specifically allowed	20%
C.5.3	Stowage of equipment other than unbagged sails on the cabin sole	20%
	Removal of the rudder from the water when the Sailing Instructions stipulate that the boat shall remain afloat for the duration of the regatta	20%

If a boat receives one of the above penalties, the protest decision shall include whether the same penalty will be applied to other races in which the same infringement likely occurred.

ATTACHMENT IV

Scoring Penalties

Action\Penalty	10%	20%	25%	30%
Touching a mark	X			
Breach of a part 2 rule ("right of way, room")	X			
Breach of a part 2 rule ("right of way, room") within the zone		X		
After Race Scoring Penalty for touching a mark		X		
After Race Scoring Penalty for a breach of a part 2 rule ("right of way, room")		X		
After Race Scoring Penalty for a breach of a part 2 rule ("right of way, room") within the zone			X	
If one of the above After Race Scoring penalties is taken after the protest time limit				X
If taken as the result of an arbitration				X
<u>Penalties imposed by the Race Committee or Jury without a hearing: These modify RRS 63.1</u>				
If a boat fails to check in before racing (SI 18.1) (RC)	X			
If some, but not all requirements of a properly taken Scoring Penalty are met (Jury)				X

ATTACHMENT V

Instructions for Application of Bow Number

Hull of the boat must be cleaned completely and dry before the numbers are put on the hull.

Bow Numbers and Event Advertising should be placed so that the top of the numbers and Sponsor Logos are 450 mm aft of the Sheer Line and Stem Line measuring point and 70 mm below the sheer line.

